



Why Oktopus® PANEL GI-B400?

The OKTOPUS® PANEL GI B400, offered by Lincer, is a versatile forklift attachment with integrated hydraulic functions, designed for the horizontal and vertical assembly of wall elements in industrial and cold room construction, as well as for installing ceiling elements up to approximately 8 meters in length. This device can handle almost all commercially available sandwich elements and many trapezoidal sheet metal profiles using proven Wirth circular and longitudinal suction cups.

Powered by a 24 V DC battery system, the electrically operated vacuum pumps ensure reliable performance. Optical and acoustic signal devices alert users to any deviations from the nominal conditions, and in the event of a total power failure, the vacuum in each suction pad is maintained for at least 5 minutes, ensuring safe load handling. The OKTOPUS® PANEL GI B400 is an essential tool for efficient and safe installation tasks in various construction environments. Contact Lincer for more information.



Made in
Germany



CONFIGURATIONS



Fork lift
attachment



Vertical wall
installation



Horizontal wall
installation



Overhead
installation



Tilt around
horizontal axis



Tilt around vertical
axis (swivel)



Control panel at
the device / cable
remote control



Radio remote
control

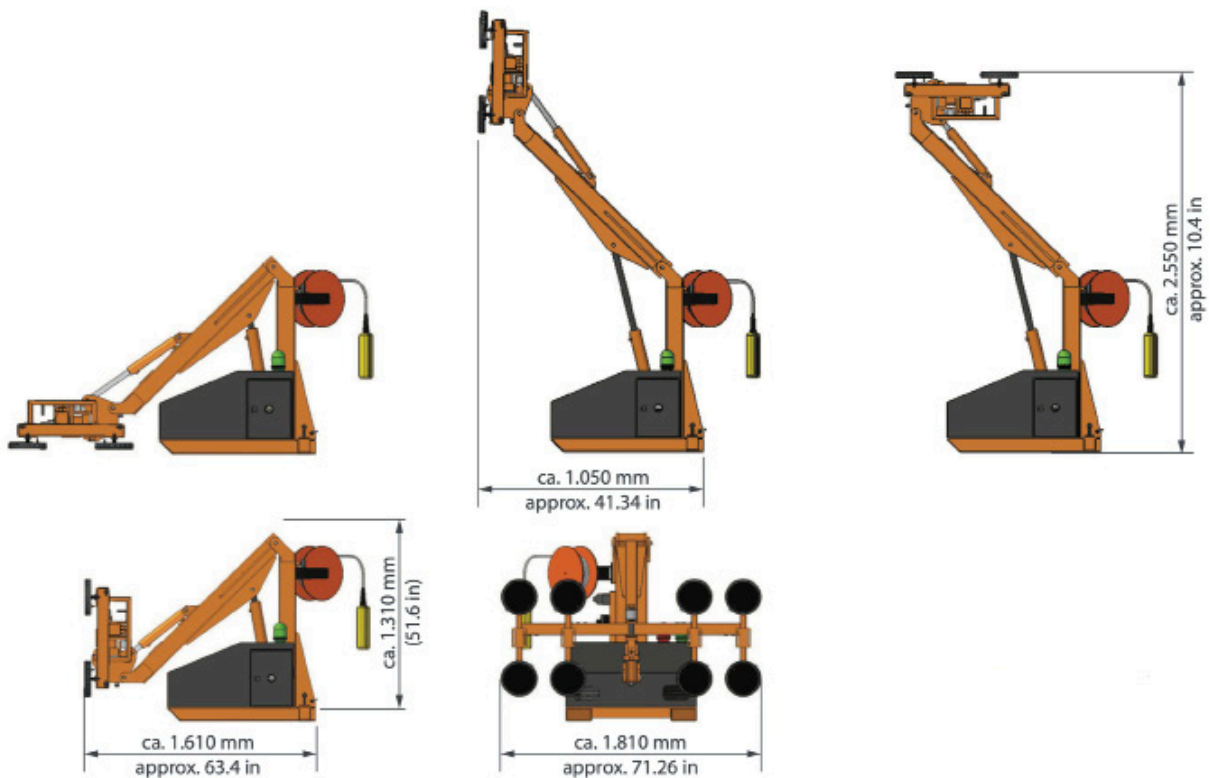


24 V
Battery

OVERVIEW

Working Load Limit	8 round suction pads (Ø 250 mm)	250 kg
	12 round suction pads (Ø 250 mm)	400 kg
	8 oval suction pads (100 mm x 320 mm)	130 kg
	12 oval suction pads (100 mm x 320 mm)	200 kg
Weight	Approx. 600 kg	
Suction pads	Wirth standard suction pads	
	<ul style="list-style-type: none"> • Round suction pads (Ø 250 mm) or • Oval suction pads (100 mm x 320 mm) 	
Vacuum generation	Electric vacuum pump	
Operation	Cable remote control	
Vacuum system	Dual-circuit vacuum system for construction site use	
Nom. pres. pneumatic system	-0,65 bar bis -0,9 bar	
Power supply	Battery, 24 V	
Optional facilities	• Radio remote control	
	• Suction bridge 5 m	
Optional equipment	Safety belts	

DIMENSIONS



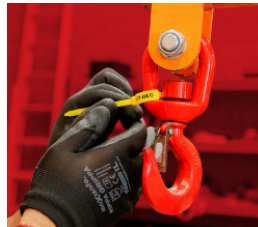
Lincer, Your Equipment Guardian.

Lincer's Services



Inspection and Testing

Our comprehensive Inspection and Testing services for vacuum lifting equipment, and material handling equipment are designed to safeguard your operations and workforce.



Schedule Maintenance

Our commitment is backed by a meticulous schedule, featuring periodic inspections, designed to proactively address any potential issues and keep your lifting equipment in peak condition.



Replacement Equipment

We offer replacement lifting equipment while yours is being serviced, ensuring your operations continue uninterrupted, keeping your projects on track.



Repairs

At Lincer, we specialise in top-tier repair services for lifting equipment. Our certified technicians are adept at addressing any damage, ensuring your equipment operates at its best.



Parts

Discover a comprehensive selection of high-quality lifting equipment parts at Lincer. We offer a wide range of genuine parts to keep your lifting equipment operating at peak performance. Shop with confidence and trust our expertise in providing reliable parts for all your lifting needs.

5 Reasons to choose Lincer

1

Peace of Mind

At Lincer, quality and safety are our top priorities. We provide best-in-class equipment to not just meet but exceed your expectations, ensuring peace of mind for every project.

2

Know-How

Backed by our professional team, which we consider our greatest asset, and fortified by strong industry partnerships, we deliver swift technical services and guarantee compliance with Australian standards, ensuring your operations run smoothly.

3

Lifecycle Management

Let us handle the entire lifecycle of your equipment. From initial sales to ongoing servicing, our end-to-end solutions are designed to optimise your operations and minimize disruptions.

4

Seamless Continuity

With Lincer, downtime is a thing of the past. We offer replacement lifting equipment while yours is being serviced, ensuring your operations continue uninterrupted.

5

Industry Affiliations

Lincer stays at the forefront of the lifting industry, keeping you informed with the latest technical, legal, and safety information. Thanks to our affiliations you can trust that you're always operating with the most up-to-date knowledge and standards.



CONTACT US

Phone: 0438 419 798

Email: info@lincer.com.au

Address: 2/4 Bostock Court, Thomastown
VIC 3074, Australia

PROUD MEMBER



Find out about our accreditations and services at:

lincer.com.au