

Why Oktopus® GGA-E-B 8000 oVH?

The OKTOPUS® GGA-E-B 8000 oVH is a load lifting attachment designed for the precise lifting and positioning of construction elements, particularly in hard-to-reach areas such as below eaves, balconies, and stages. Compliant with DIN EN 13155 standards, this counterweight balancer is equipped with an integrated load hook and works with various slings (ropes, chains, belts) to handle loads up to 8,000 kg.

Featuring electrically driven counterweights, the GGA-E-B 8000 oVH ensures balanced lifting operations, controlled via cable remote control or an optional radio remote control. It is powered by a high-capacity battery, with a built-in gauge for monitoring energy supply, making it a reliable and efficient solution for complex lifting and positioning tasks.



CONFIGURATIONS



Crane attachment



Telescopic boom/
crane arm/lifting
column



Control panel at
the device / cable
remote control



Radio remote
control

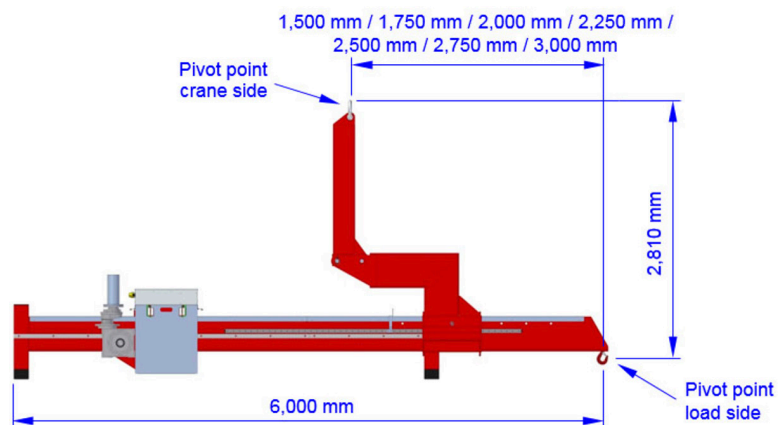


Battery

OVERVIEW

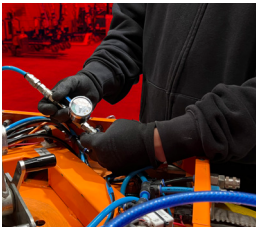
	Overhang	Working Load Limit of the counterweight balancer
Working Load Limit	1,50 m	8,000 kg
	1,75 m	6,400 kg
	2,00 m	5,250 kg
	2,25 m	4,300 kg
	2,50 m	3,650 kg
	2,75 m	3,000 kg
	3,00 m	2,500 kg
Counterweights	58 pieces removable (1 counterweight = 50 kg)	
Operation	Cable remote control, radio remote control optional	
Power supply	24 V battery system	
Weight	• Approx. 1,200 kg (without counterweights)	
	• Approx. 4,100 kg (with 58 pieces counterweights)	

DIMENSIONS



Lincer, Your Equipment Guardian.

Lincer's Services



Inspection and Testing

Our comprehensive Inspection and Testing services for vacuum lifting equipment, and material handling equipment are designed to safeguard your operations and workforce.



Schedule Maintenance

Our commitment is backed by a meticulous schedule, featuring periodic inspections, designed to proactively address any potential issues and keep your lifting equipment in peak condition.



Replacement Equipment

We offer replacement lifting equipment while yours is being serviced, ensuring your operations continue uninterrupted, keeping your projects on track.



Repairs

At Lincer, we specialise in top-tier repair services for lifting equipment. Our certified technicians are adept at addressing any damage, ensuring your equipment operates at its best.



Parts

Discover a comprehensive selection of high-quality lifting equipment parts at Lincer. We offer a wide range of genuine parts to keep your lifting equipment operating at peak performance. Shop with confidence and trust our expertise in providing reliable parts for all your lifting needs.

5 Reasons to choose Lincer

1

Peace of Mind

At Lincer, quality and safety are our top priorities. We provide best-in-class equipment to not just meet but exceed your expectations, ensuring peace of mind for every project.

2

Know-How

Backed by our professional team, which we consider our greatest asset, and fortified by strong industry partnerships, we deliver swift technical services and guarantee compliance with Australian standards, ensuring your operations run smoothly.

3

Lifecycle Management

Let us handle the entire lifecycle of your equipment. From initial sales to ongoing servicing, our end-to-end solutions are designed to optimise your operations and minimize disruptions.

4

Seamless Continuity

With Lincer, downtime is a thing of the past. We offer replacement lifting equipment while yours is being serviced, ensuring your operations continue uninterrupted.

5

Industry Affiliations

Lincer stays at the forefront of the lifting industry, keeping you informed with the latest technical, legal, and safety information. Thanks to our affiliations you can trust that you're always operating with the most up-to-date knowledge and standards.



MARK DOC OKT 004

CONTACT US

Phone: 0438 419 798

Email: info@lincer.com.au

Address: 2/4 Bostock Court, Thomastown
VIC 3074, Australia

PROUD MEMBER



Find out about our accreditations and services at:

lincer.com.au