

SG 450

Glass Robot

WHEN REACH MATTERS



Why SG 450?

Go the extra reach. Redefine what's possible by accessing the first floor. Elevate up to 5.8m with a true lifting capacity of 450 kg.

VERSATILITY

- Hydraulic tilting head frame
- 180° degree Manual Rotation
- 90° degree lateral manual movement

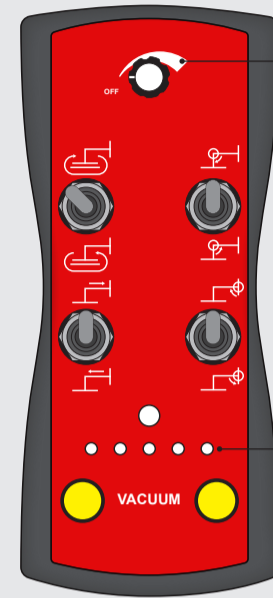
REACH

5.8 m high
3.5 m in front of the wheels

EXTENSION

Arm with 3 hydraulic telescopic segments

Control unit for telescopic arm and lifting yoke



CONTROL

Proportional control. Smooth movement with "High" and "Low" speed control.

Monitoring with load cells
Weight Range display via LED

EFFICIENCY

Radio remote control (optional)

SAFETY

Emergency Stop button

POWERFUL

Hydraulic glass robot with an electric drive

SAFETY

Automatic speed reduction when the load limit is reached
Emergency Stop button

RELIABILITY

Rock-solid operation with swivel/steering arm

PIVOT

Side Shift operation of Boom

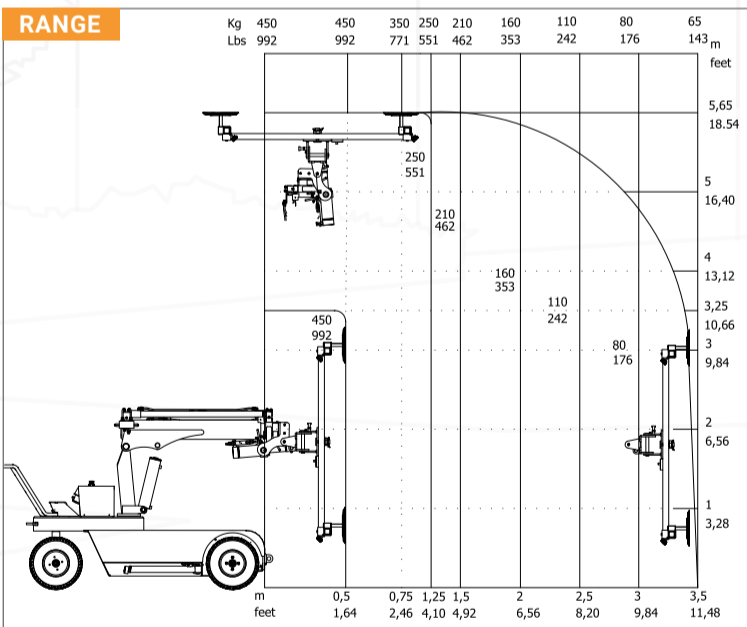
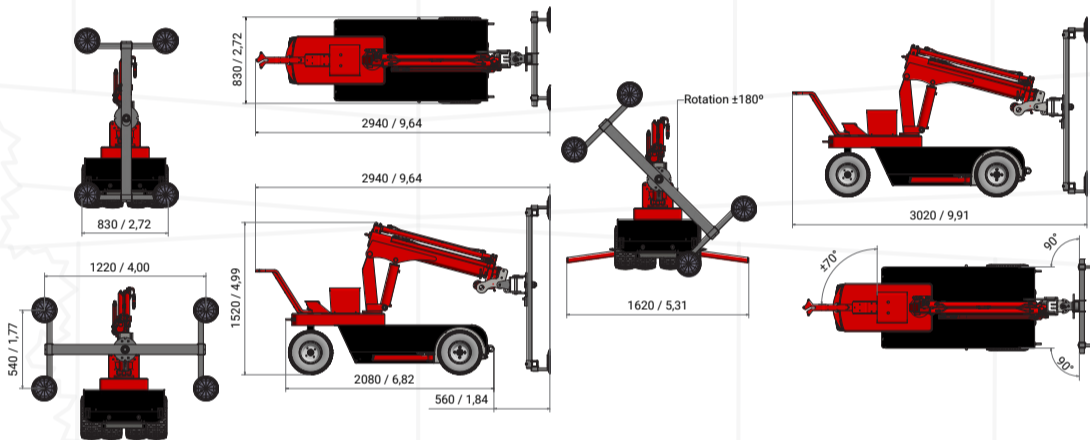
ALL TERRAIN

Special tires, designed for difficult terrain

Approved for indoor and outdoor use

Lowest load centre in the industry

STABILITY



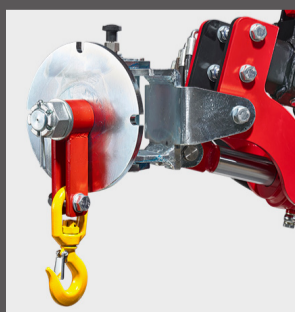
Accessories

Pallet forks



Easily attach pallet forks to your SG Robot for lifting pallets loaded with windows, glass, panels, and building materials, boosting versatility. Compatible with SG350, SG450, and SG650 models, they expand your glass vacuum robot's capabilities.

Pick and carry hook



Swap out the lifting yoke with suction cups and mount the pick and carry hook for flexible lifting when suction cups aren't effective. Compatible with SG350, SG450, and SG650 models, it broadens your glass vacuum robot's application range.

Overview

Traction	2WD rear wheel drive
Max. Height	~ 5.8m
Max. Lateral radius	3.5m
Max Capacity	Pick & Carry: 450Kg
Weight	1050 Kg
Speed	5 km / h
Dimensions	2.07 x 0.81 x 1.52 m



Feel free to reach out to us at 0401707444 or send us an email at info@lincer.com.au
Our friendly team is here and ready to assist you!

Your Equipment, Our priority.

lincer.com.au



Lincer, Your Equipment Guardian.

Lincer's Services



Inspection and Testing

Our comprehensive Inspection and Testing services for vacuum lifting equipment, and material handling equipment are designed to safeguard your operations and workforce.



Schedule Maintenance

Our commitment is backed by a meticulous schedule, featuring periodic inspections, designed to proactively address any potential issues and keep your lifting equipment in peak condition.



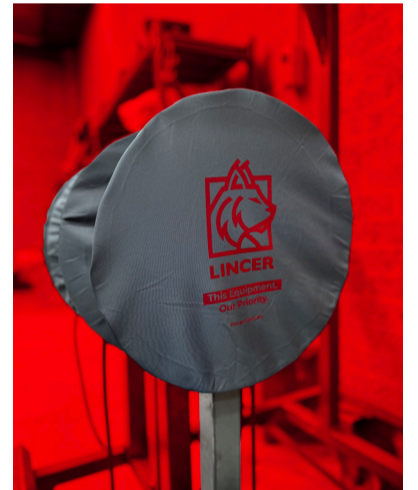
Replacement Equipment

We offer replacement lifting equipment while yours is being serviced, ensuring your operations continue uninterrupted, keeping your projects on track.



Repairs

At Lincer, we specialise in top-tier repair services for lifting equipment. Our certified technicians are adept at addressing any damage, ensuring your equipment operates at its best.



Parts

Discover a comprehensive selection of high-quality lifting equipment parts at Lincer. We offer a wide range of genuine parts to keep your lifting equipment operating at peak performance. Shop with confidence and trust our expertise in providing reliable parts for all your lifting needs.

5 Reasons to choose Lincer

1

Peace of Mind

At Lincer, quality and safety are our top priorities. We provide best-in-class equipment to not just meet but exceed your expectations, ensuring peace of mind for every project.

2

Know-How

Backed by our professional team, which we consider our greatest asset, and fortified by strong industry partnerships, we deliver swift technical services and guarantee compliance with Australian standards, ensuring your operations run smoothly.

3

Lifecycle Management

Let us handle the entire lifecycle of your equipment. From initial sales to ongoing servicing, our end-to-end solutions are designed to optimise your operations and minimize disruptions.

4

Seamless Continuity

With Lincer, downtime is a thing of the past. We offer replacement lifting equipment while yours is being serviced, ensuring your operations continue uninterrupted.

5

Industry Affiliations

Lincer stays at the forefront of the lifting industry, keeping you informed with the latest technical, legal, and safety information. Thanks to our affiliations you can trust that you're always operating with the most up-to-date knowledge and standards.



Feel free to reach out to us at **0401707444**
or send us an email at **info@lincer.com.au**
Our friendly team is here and ready to assist you!

**Your Equipment,
Our priority.**

lincer.com.au